



Technical Service BULLETIN

April 16, 1999

Title:

REPAIR MANUAL CORRECTIONS

Models:

'98 RAV4 EV

EV003-99

ALTERNATIVE FUEL VEHICLES

Introduction Corrections have been made in the '98 RAV4 EV Repair Manual. A sample copy of each correction is provided.

NOTE:

When ordering a technical publication (i.e. Repair Manual, Electrical Wiring Diagram) from the MDC, any Correction Page(s) associated with that particular Publication, will automatically be included with your order.

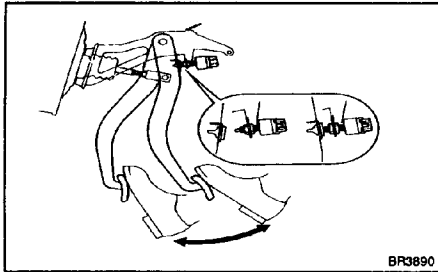
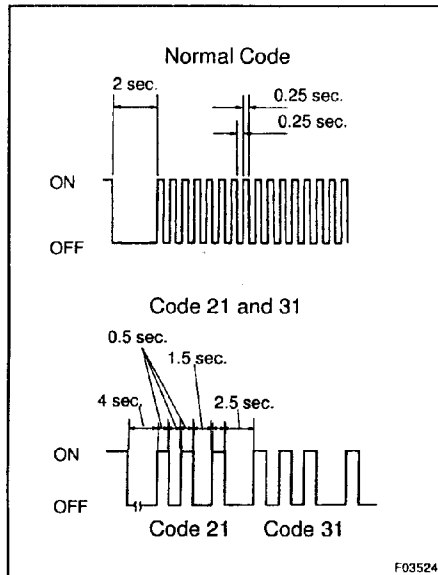
Parts Information Correction Pages are available through the Dealer Support Material Network (MDC NPM System) via the corresponding part numbers from the following table:

PUBLICATION	NUMBER	PAGE(S)	PART NUMBER
1998 RAV4 EV	RM600-U	DI-238 DI-239 DI-266 DI-267 DI-341	00400-RM600-8064



'98 RAV4 EV
Repair Manual
RM600–U
Page DI–238

DIAGNOSTICS – TIRE PRESSURE WARNING SYSTEM



- As an example, the blinking patterns for normal code and codes 21 and 31 are shown on the left.
- (4) Code are explained in the code table on page DI–243.
- (5) After completing the check, disconnect terminals Tc and E₁, and turn off the display.

If 2 or more malfunctions are indicated at the same time the lowest numbered DTC will be displayed 1st.

- (c) Clear the DTC.
 - (1) Using SST, connect terminals Tc and E₁ of DLC1.
SST 09843 – 18020
 - (2) Turn the motor switch ON.
 - (3) Clear the DTC stored in ECU by depressing the brake pedal 8 or more times within 5 seconds.
 - (4) Check that the warning light shows the normal code.
 - (5) Remove the SST from the terminals of DLC1.
SST 09843 – 18020

HINT:

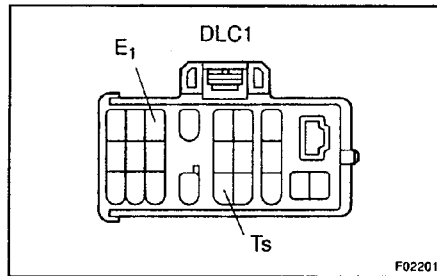
Disconcerting the battery cable during repairs will not erase the DTC in the ECU.



DIAGNOSTICS – TIRE PRESSURE WARNING SYSTEM

3. BASIC INSPECTION

When the malfunction code is not confirmed in the DTC check, troubleshooting should be performed in the order for all possible circuits to be considered as the cause of the problems. In many cases, by carrying out the basic check shown in the following flow chart, the location causing the problem can be found quickly and efficiently. Therefore, use of this check is essential in troubleshooting.

1 Check whether or not tire pressure warning light becomes on.**PREPARATION:**

- (a) Using SST, connect terminals Ts and E₁ of DLC1.
SST 09843–18020
- (b) Turn the motor switch ON.

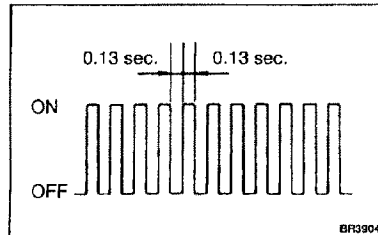
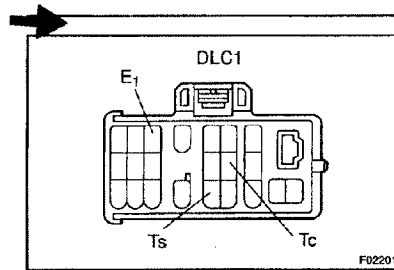
CHECK:

Check whether or not tire pressure warning light becomes on.

NO**Go to step 5.****YES****2 Is tire pressure warning light go off?****NO****Go to step 6.****YES**

'98 RAV4 EV
Repair Manual
RM600–U
Page DI–266

DIAGNOSTICS – ABS & HYDRAULIC BRAKE BOOSTER POWER
SUPPLY SYSTEM



3. SENSOR SIGNAL CHECK (TEST MODE)

HINT:

If the motor switch is turned from ON to ACC or LOCK during test mode, DTC will be erased.

(a) Check the sensor signal.

(1) Turn the motor switch OFF.

(2) Using SST, connect terminals Ts and E₁ of DLC1.

SST 09843 – 18020

(3) Start the engine.

(4) Check that the ABS warning light blinks.

HINT:

If the ABS warning light does not blink, inspect the ABS warning light circuit and Ts circuit (See page DI–325, DI–335).

HINT:

At this time, the ABS warning light comes on for 3 secs.

(5) Drive vehicle straight forward.

When driving the vehicle at the speed faster than 45 km/h (28 mph) for several seconds, check that the ABS warning light comes off.

HINT:

There is a case that the sensor check is not completed if the vehicle has its front wheels spinning during this check.

(6) Stop the vehicle.

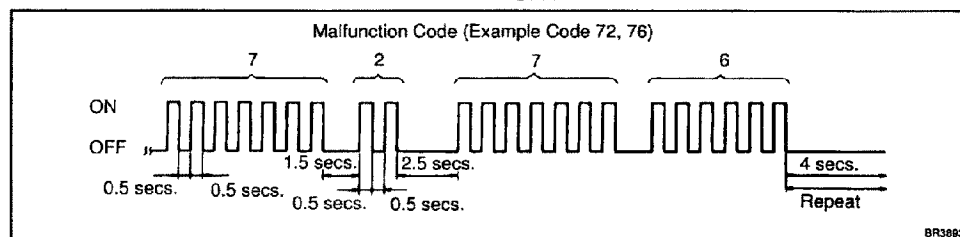
(7) Using SST, connect terminals Tc and E₁ of DLC1.

SST 09843 – 18020

(8) Read the number of blinks of the ABS warning light.

HINT:

- See the list of DTC in the middle of this page.
 - If every sensor is normal, a normal code is output (A cycle of 0.25 secs. ON and 0.25 secs. OFF is repeated).
 - If 2 or more malfunctions are indicated at the same time, the lowest numbered code will be displayed 1st.
- (9) After doing the check, disconnect terminals Ts and E₁, Tc and E₁ of DLC1, and turn the motor switch OFF.



'98 RAV4 EV
Repair Manual
RM600–U
Page DI–267

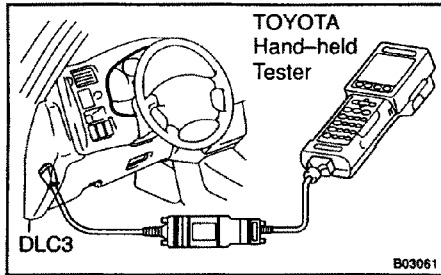
DIAGNOSTICS – ABS & HYDRAULIC BRAKE BOOSTER POWER
SUPPLY SYSTEM

DTC of sensor check function

Code No.	Diagnosis	Trouble Area
71	Low output voltage of right front speed sensor	<ul style="list-style-type: none"> • Right front speed sensor • Sensor installation • Sensor rotor
72	Low output voltage of left front speed sensor	<ul style="list-style-type: none"> • Left front speed sensor • Sensor installation • Sensor rotor
73	Low output voltage of right rear speed sensor	<ul style="list-style-type: none"> • Right rear speed sensor • Sensor installation • Sensor rotor
74	Low output voltage of left rear speed sensor	<ul style="list-style-type: none"> • Left rear speed sensor • Sensor installation • Sensor rotor
75	Abnormal change in output voltage of right front speed sensor	<ul style="list-style-type: none"> • Right front speed sensor rotor
76	Abnormal change in output voltage of left front speed sensor	<ul style="list-style-type: none"> • Left front speed sensor rotor
77	Abnormal change in output voltage of right rear speed sensor	<ul style="list-style-type: none"> • Right rear speed sensor rotor
78	Abnormal change in output voltage of left rear speed sensor	<ul style="list-style-type: none"> • Left rear speed sensor rotor

'98 RAV4 EV
Repair Manual
RM600–U
Page DI–341

DIAGNOSTICS – REGENERATIVE BRAKE SYSTEM



- (e) In case of using TOYOTA hand-held tester:
Clear the DTC.
- (1) Hook up the TOYOTA hand-held tester to the DLC3.
 - (2) Turn the motor switch ON.
 - (3) Operate the TOYOTA hand-held tester to erase the codes. (See TOYOTA hand-held tester operator's manual.)